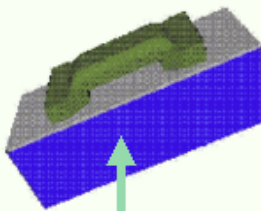


# ακαδημία --- Advanced CAD for MEMS

## Goals:

Ability to prototype MEMS devices with advanced CAD that exploits progress in VLSI TCAD

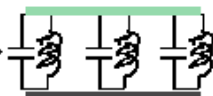


RF Switch as Demo

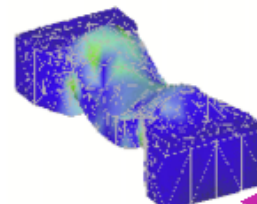
- HLL + APIs
- Grid + FEM
- Test Devices
- Materials

## Approach:

Hierarchical extraction of essential behavior from detailed FEM models



1D Compact Model

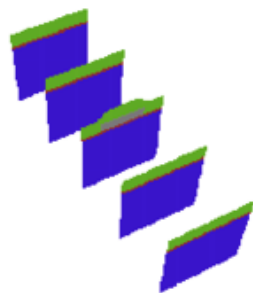


(i.e., MAJET Pgm.)



## Status:

Level-set geometry creation (simulation-based)



## Schedule:

Year	21	Q2	31
•3D Geo Proto. based on TTX+CIF(in) -> VRML(out)			(Adv. Geo & Grid)
•Integrated CAD Demo			(Integration & GUI)
•Test Chips -- Materials Char. & Fatigue Struct.			(FEM Solvers)
•RF Switch Demo (new materials)			(Test Structures)
			(Materials Eval.)
			(Demonstrations)
			Δ NOW